



VIGILATE

Homeland Security ANPR

Monitoring and analysis of traffic for control and security of the territory.





Homeland Security



A complete solution:
**from devices field
for the control
of the territory to
the platform of
supervision**



We appeal to local police, to mayors and local Municipalities, with a package of solutions designed and implemented for the specific objectives of the Public Administration.

- Professional and reliable solutions for security, security, traffic monitoring and analysis, to control and protect your territory
- A specific value proposition dedicated to municipal governments, local police and planners
- A single point of contact for a turnkey offer
- The best digital technology, from field devices field to management software
- Information gathering and analysis, valuable for support strategic decisions
- Video verification and supervision of vehicular flow in the municipality
- Production of statistical data for traffic
- License plate management
- Vehicle lists
- Transit searches
- Alarms
- Verification of insurance revision status
- Supervision of vehicles transporting dangerous goods
- Analysis of the type of vehicles on the road
- Analysis of traffic trends
- Video streaming and local NVR
- Notification of vehicles that are dangerous, stolen, or generally reported by local police



The data obtained from our software platform is a valuable aid for:

- **Making strategic decisions**
- **Understand risk factors**
- **Analyze traffic flows**
- **Identify suspicious or dangerous vehicles and ensure maximum safety**



The universal platform for the world of security and traffic management scalable, accessible, intelligent, cloud or private

A full range of vertical applications dedicated to Security and Traffic Management, business and consumer software to enable industry partners to better manage and control their products and deliver new services to their customers.

XSCANNER
Traffic Management

Operations Center of the local police

ANALYTICS
Data analysis

Supervision and analysis of administrators



Transit data

- Transit vehicles
- Estimated speed
- ADR Dangerous goods presence
- Vehicle direction
- Nationality of vehicle
- Insurance check
- Administrative detention check
- Overhaul control
- SCNTT data production



Alarm events

- Alert on particular Kemer
- Alarm on Kemer risk
- Vehicle stopped in the gap
- Slow traffic
- Queue
- Vehicle in prohibited direction
- Insurance alert
- Failure to inspect alarm
- Black list alarm
- SCNTT Alarm
- Access allowed on White list
- Tunnel risk alert



Statistical data

- Vehicle count
- Count by class
- Lane occupancy
- Count by euro class
- Count by nationality
- Route matrix Origin Destination
- Data export to other management systems



Additional data

- Vehicle class
- Vehicle color
- Brand of the vehicle
- Model of the vehicle
- Year of registration (for Italian vehicles)
- Relative euro class (for Italian vehicles)
- Province of ownership (for Italian vehicles)



Technology behind a reader license plates.



Professional Anpr Cameras high performing cameras

- More than 20,000 professional ANPR installations deployed worldwide
- Best price/performance ratio in professional applications
- 20 different professional products to cover all application needs of the customer from parking and land monitoring to specific solutions designed for tolling and enforcement from 70 to 250 km/h, 2 to 12 Mpixels
- Up to 75 analyzed images (OCR) for transits up to 250 km/h
- UNI 10772:2016 Class A certified cameras - up to 7-meter wide road, 2 lanes, front, rear license plates, motorcycles, up to 30° offset side



Main features

High performance professional OCR

OCR library mixed between traditional approach and neural network to be more precise in character recognition OCR to improve nationality recognition

Multiple images capture in sync

Strobed pulsed infrared illuminator

High-Speed CMOS

Global Shutter, Rolling Shutter, Black/White, Color, from 2 to 12 Megapixel

Day & Night

High performance day and night

PoE

UPoE 60W class 6 power supply

Certifications

EN ISO 9001 :2015 , ISO/IEC 27017:2015
ISDP©10003:2020

Double camera

Double head for OCR and Context

Deep Learning

Algorithm training on a neural network directly produced by the Vigilante R&D team.

HD SSD

from 128GB to 4TB HD in solid state technology

NVIDIA Inside

Powered by NVIDIA deep learning hardware



API

REST API libraries (with authentication) that guarantee the possibility of integration with third-party systems.

Local Nvr function

Continuous recording function on board high resolution video streaming camera; transit video clip production.

AID

AID (Automatic Incident Detection) gate algorithms for traffic control (stationary vehicle, wrong-way vehicle, slow traffic, queue).

ANPR

OCR library on board with 41 European, 13 Asian, 6 African, 5 South American nations and special license plates such as Trailers, Kemler ADR, Kemler ADR Empty, Tram.

Vehicles classes

Classificazione diurna dei veicoli per tipologia in 11+ 1 (Macchine, Camion, Camion con rimorchio, Motoveicoli, Motocicli, Ciclomotori, Bus, Mini van, Big van, Cassonati, Caravan, sconosciuto).

Colors

Daytime classification of vehicles by color in 11 classes + 1 (black, white, grey, red, blue, yellow, green, orange, pink, purple, cyan, unknown).

Models

Model classification of vehicles in transit rear view (about 400 models supported).

Streaming Video

Continuous streaming function RTSP H264, HLS, MJPEG and complete Onvif S profile protocol.



Speed estimate

Transit speed estimation function

Checklist

Black & White List

Night-time classification of vehicles by type in 4 classes +1 (trucks, buses, cars, motor vehicles and unknown).

Brand

Vehicle brand classification (around 100 brands supported).

Cloud Ready

Compatible with Vigilante's v-SUITE general supervision platform.



v-PATROL 5B

the license plate reading device on the move for control in patrolling.

v-PATROL 5B allows law enforcement officers, while they are conducting a patrol service on the street, to quickly check vehicles on the side of the road or parked in parking lots. Mounted externally via magnetic plate or internal via suction cup bracket. Does not need approval assessment is carried out by a police operator. License plate capture, ADR codes, nationality, direction, speed, vehicle classification, make, color. Possible data export to csv for import into systems for verbalization.

UTILITIES:

- Moving analysis of parked vehicles
- Moving analysis of vehicles crossed in the oncoming lane
- Roadside checkpoint at stationary patrol
- Maximum relative speed limit reading 200 km/h

KIT:

- v-PATROL con staffe
- Power bank e alimentazione da accendisigari
- Router 4G (sim esclusa)
- Tablet
- PC con software centralizzato Xscanner

SCNTT

The integration module with SCNTT allows the Xscanner platform to interoperate with the server of the State Police in order to detect transits of cars stolen or monitored by police forces.

MAIN GOALS:

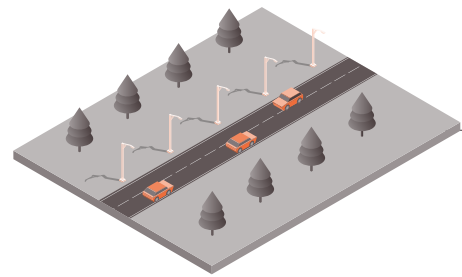
- Acquire and distribute to peripheral systems the national lists of stolen license plates, those those reported by police offices and those not reviewed only for the peripheral systems
- Traffic Police peripheral systems.
- Realize a single Database for all recorded transits of peripheral systems of video surveillance.
- Implement mechanisms for correlation and propagation between systems of the alarms related to reported license plates.
- Provide services via Web interface to the Offices in order to conduct searches on the transits, report license plates and view alerts under their jurisdiction.

Integration between SCNTT and Xscanner

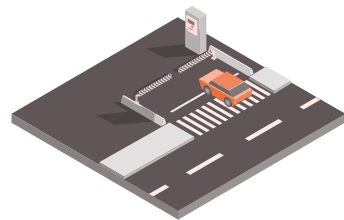
SCNTT connection requires the installation of a server at the police headquarters, which will receive data from individual peripheral Xscanners and communicate directly via a private network with the national processing center. In terms of security, thanks to all the connected license plate reading equipment, vehicles will be able to be tracked throughout the country. For local police, the advantage comes from having the data of stolen vehicles updated directly from the SDI database.



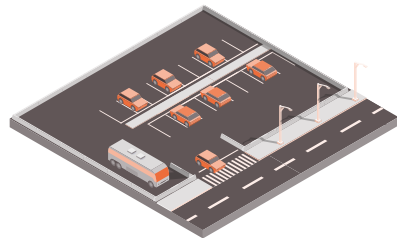
Applications



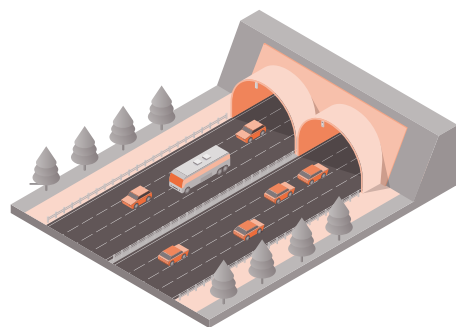
Urban traffic



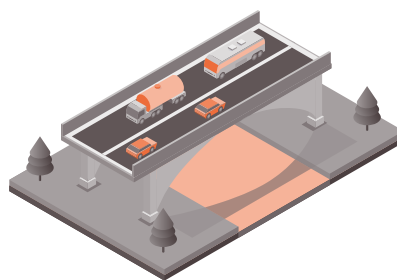
Access control



Parking



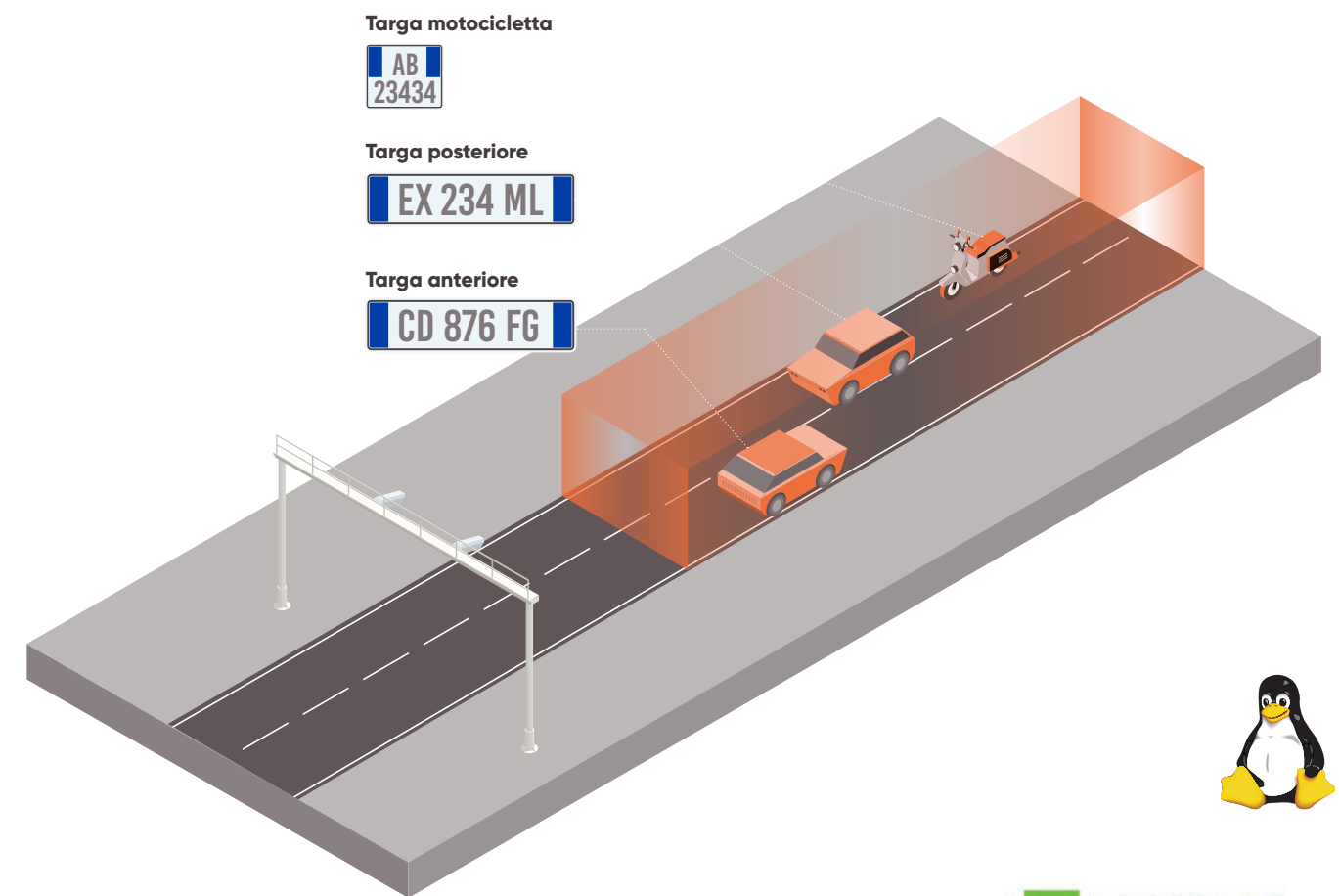
Tunnel control



Bridge control

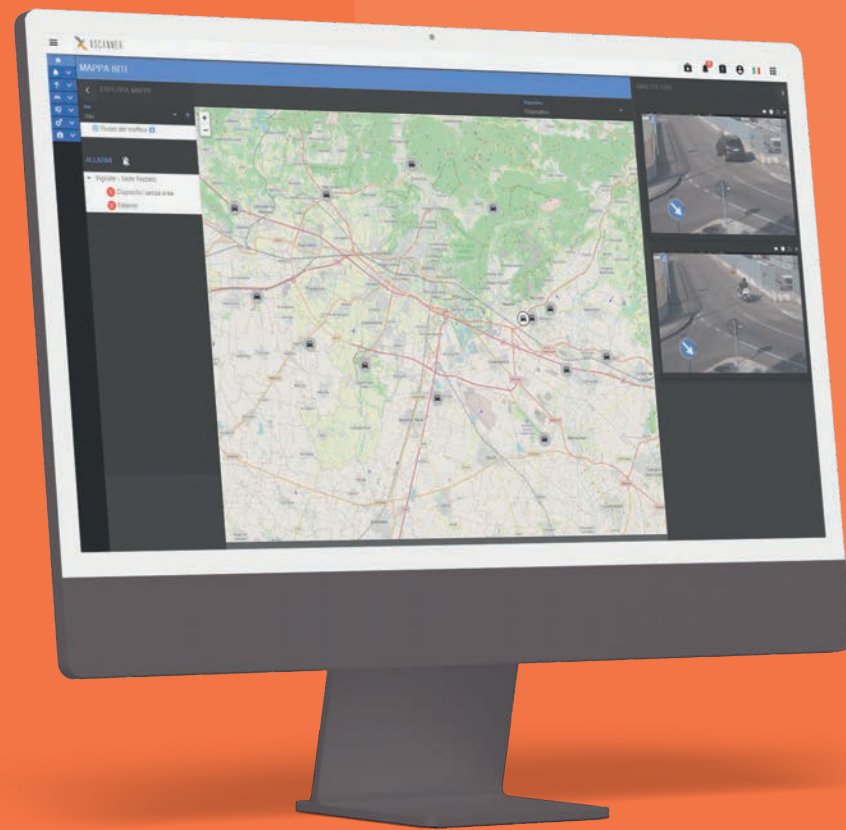
Certifications

Uni 10772 class A certified up to 30° offset lateral. 2 lanes, road width 7 meters, license plates front, rear and motorcycles.





Products





AXB product line

ANPR Bispectral

Cameras in the v-LANE AXB bispectral line are composed of a single optics. On-board software analyzes images from a single sensor reading both spectra (IR + visible light). This technology reduces costs and risk of failure but does not allow for diversify the framings between OCR image and context image except through postprocessing operations



v-LANE A2B 2MPX@60 fps
ANPR 250 Km/h



v-LANE A3B 3MPX@75 fps
ANPR up to 250 Km/h



v-LANE A5B 5MPX@75 fps
ANPR 250 Km/h

AXDX product line

ANPR Double optics

The cameras in the v-LANE AX DX dual-optics line consist of two optics: one B/W dedicated to reading the license plate and the other in color used to have a context image. With this technology it is possible to have two different shots obtained through optics with different focal lengths.



v-LANE A2 D2 @60fps
ANPR 250 Km/h



v-LANE A3 D2 @75fps
ANPR 250 Km/h



v-LANE A5 D2 @75fps
ANPR 250 Km/h



v-LANE A5 D5 @75fps
ANPR 250 Km/h



v-LANE A5 D8 @75fps Multifunctional
ANPR 250 Km/h



Bispectral



Double optics



General parameters

Optical group

Sensor (OCR + COLOR):

Frame rate:

Optics:

From 2MP to 5MP

Up to 75 fps

Standard varifocal lens, 8-50 mm

Double optics

Sensor (OCR + COLOR):

Frame rate OCR:

Color Sensor:

Frame rate COLOR:

Optics:

From 2MP to 5MP

Up to 75 fps

From 2MP to 8MP

Up to 75 fps

Standard varifocal lens, 8-50 mm

Illuminator

Integrated IR illuminator:

n. 8 LED IR (CLASS 1M CEI EN 69825-1 ED. 4, 850 nm IR LED)

Power Supply

Supported power supply:

Consumption:

24VDC (2,5 A) or +12VDC (5 A) or UPoE 60W class 6

12W typically

General characteristics

Dimensions:

Weight:

Operating temperature:

Humidity:

Protection:

450 x 140 x 150 mm

2,6 Kg

- 30°; +60°

up to 90%

IP67 - class IK10 (on request)

Certifications

OCR library:

Classification algorithms:

AID algorithm:

Data security:

Certified high reliability, the library has been validated several times by UNI 10772:2016 class A for all vehicle classes

The percentages of correct classification depend on compliance with the installation geometry but are above 90% regardless of the external environmental conditions

The instantaneous speed estimation by video analysis and consequently the AID algorithm with the various supported features are highly reliable as demonstrated by numerous field tests in the presence of approved systems for speed estimation for sanctioning purposes.

ISDP10003:2018 - Privacy by Default e Privacy by Design

Regulations

Regulations complied with:

EN 55032:2015, EN 55035:2017, EN 50561-1:2013
 EN 62368-1 (EN 62368-1:2014+A11:2017)
 EN 60068-2-14:Nb 2011-11
 EN 60068-2-78:2013-11
 EN 62471:2010
 EN60529:1991+A1:2000+A2:2013
 UE Regulation 2016/679 (GDPR)



General parameters

HW features:	
Processor:	Quad-core + HW video encoder unit + Neural coprocessor
Memory:	16 GB e-MMC Flash
RAM:	4 GB
S.O.:	Linux
Storage Disk:	HD SSD 128 GB (Fino a 4 TB)
I/O:	N. 2 input opto-isolated N. 1 output relè N. 1 fast output strobo 12-24 VDC N. 1 output open-collector 12-24 VDC"
Ports:	N.1 USB port N.1 RS-485 port N.1 10/100/1000 Mbps Ethernet port "
SW features:	
Operating mode:	<ul style="list-style-type: none"> - continuously acquisition (free-run) - on request (by SW trigger or HW trigger) Both modes can draw on the two local lists that can be configured locally or by remote synchronization with the FTP server
Real-time diagnostics:	<ul style="list-style-type: none"> - CPU temperature - Mainboard temperature - IR illumination module operation - Lighting module current peaks - Capture status of physically connected sensors - Input current level (power port) - Input voltage level (power port) - Camera tilt angle - Internal humidity level - CPU consumption - RAM consumption - Storage disks status - Utilization of the 4 physical cores (CPU monitoring) - Check status of operational threads - Monitoring of analysis times and operating status of active algorithms Generation of any alarms (local and possibly remote) in the face of anomalies detected
Supported sending protocols:	<ul style="list-style-type: none"> - TCP (in binary, XML, string formats) - TCP Milestone - FTP (imgs + text data in *.txt/*.csv) - RPC-XML over HTTP / HTTPS (BASIC or EXTENDED message) - Custom Protocol (message configurable via template and sendable by HTTP POST / HTTPS POST /TCP protocols) - Serial (on RS 485 port) - Wiegand (need to install SC20 converter) - Xentinel message (over HTTP) - v-SUITE message (over HTTP / HTTPS)
Supported communication protocols:	<ul style="list-style-type: none"> - TCP/IP - UDP - HTTP - HTTPS - FTP - FTPS - RTP/RTSP - openVPN - ONVIF (S- profile) - NTP - SNMP
Data protection:	<ul style="list-style-type: none"> - possibility to activate the management of the web configurator by HTTPS connection - FTPS encryption on TLS/SSL protocol - AES-256-ECB encryption for data and images saved locally and/or sent via the supported protocols - image hash using SHA-512 algorithm and possible encryption of the signature itself using AES-256-ECB - totally GDPR compliant storage management with periodic deletion of the history - cockpit masking function (in case of front detection of vehicles) in order to ensure respect for privacy - possibility to connect the camera inside an openVPN with certificate installed directly on board - advanced management of the firewall on the machine with the possibility of disabling access to the local servers present on the machine (FTP server, ONVIF server, SNMP server, service ports)

General parameters

Optionals

Fixed optics:	✓
Modulo GPS:	✓
Modulo Wi-fi:	✓

General textual parameters

Lanes:	Up to 2 lanes
Camera:	OCR + COLOR double head camera
Speed reading:	Plate reading up to 250 km/h in free-run
Illuminator:	Integrated IR illuminator with stroboscopic LEDs
Resolution:	Resolution up to 8MP context camera
OCR library:	OCR library on board with 41 countries in Europe, 13 Asia, 6 Africa, 5 South America and special plates such as Trailers, Kemler ADR, Kemler ADR Empty, Tram
Vehicle type daytime classification:	Daytime classification of vehicles by type in 11 + 1 (Cars, Trucks, Trucks with trailers, Motor vehicles, Motorcycles, Mopeds, Buses, Mini vans, Big vans, Flatbed trucks, Caravans, unknown)
Vehicle type night classification:	Night classification of vehicles by type in 4 classes +1 (trucks, buses, cars, motorcycles and unknown)
Daytime Vehicle Color Classification:	Daytime classification of vehicles by color in 11 classes + 1 (black, white, grey, red, blue, yellow, green, orange, pink, purple, cyan, unknown)
Vehicle brand daytime classification:	Vehicle brand classification (around 100 brands supported)
Vehicle Model Daytime Rating (Optional):	Model classification of vehicles in transit - Rear view (about 400 models supported)
AID:	Gate AID algorithms for traffic control (stationary vehicle, wrong-way vehicle, slow traffic, queue)
Speed estimation:	Transit speed estimation function
Lists:	Black & White lists
Onvif:	ONVIF S profile
NVR function	Local NVR function for storage continuous recording of camera video streaming and creation of micro movies on vehicle transits
Cloud:	Cloud ready
v-SUITE:	Compatible with the Vigilate v-SUITE general supervision platform
Data:	Data and images can be stored directly locally on a Micro SD card, sent to the customer's supervision system or sent to the v-SUITE supervision platform. The device has FTP, XML-RPC (on HTTPS) and serial transmission protocols. Software Optical Character Recognition (OCR) library complete with 41 countries in Europe, 13 Asia, 6 Africa, 5 South America and special plates such as Trailers, Kemler ADR, Kemler ADR Empty, Trams (Police, Army, Ambulance, Civil Protection...).
Classification:	The camera is equipped with a video classification software capable of recognizing vehicle types with 11 + 1 classes including (Cars, Trucks, Trucks with trailers, Motor vehicles, Motorcycles, Mopeds, Buses, Mini vans, Big vans, Box bodies, Caravan, unknown); it is also able to identify the dominant color among a range of 11 colors + 1 (black, white, gray, red, blue, yellow, green, orange, pink, purple, cyan, unknown). v-Lane is equipped with gate AID algorithms for traffic control (stationary vehicle, wrong-way vehicle, slow traffic, queue).
Data security:	The storage and transmission of data generated by the product takes place using highly reliable and secure protocols, guaranteeing the highest level of inviolability and privacy. Vigilate complies with the most restrictive regulations on data security such as ISO27001:2022 and ISDP10003:2018 - Privacy by Default and Privacy by Design.



Patrol 5B

ANPR Mobile



Bispectral	OCR sensor: 5 MP (2560 x 1936) CMOS COLOR + IR (bispectral) global shutter sensor Frame rate: Up to 75 fps COLOR sensor: fixed lens (f = 16 mm)	Illuminator	Integrated IR illuminator: n. 8 LED IR (CLASS 1M CEI EN 69825-1 ED. 4, 850 nm IR LED)
Processor	Processor: Quad-core + HW video encoder unit + Neural coprocessor Memory: 16 GB e-MMC Flash RAM: 4 GB S.O.: Linux Storage Disk: HD SSD 128 GB (up to 2 TB) Ports: N.1 10/100/1000 Mbps Ethernet port	Power Supply	Supported power supply: 12VDC (5 A) or UPoE 60W class 6 Consumption: 12W typically
Software features:	Operating mode: <ul style="list-style-type: none"> - continuously acquisition (free-run) - on request (by SW trigger or HW trigger) Both modes can draw on the two local lists that can be configured locally or by remote synchronization with the FTP server		
Real-time diagnostics:	<ul style="list-style-type: none"> - CPU temperature - Mainboard temperature - IR illumination module operation - Lighting module current peaks - Capture status of physically connected sensors - Input current level (power port) - Input voltage level (power port) - Camera tilt angle - Internal humidity level - CPU consumption - RAM consumption - Storage disks status - Utilization of the 4 physical cores (CPU monitoring) - Check status of operational threads - Monitoring of analysis times and operating status of active algorithms Generation of any alarms (local and possibly remote) in the face of anomalies detected		
Supported sending protocols:	<ul style="list-style-type: none"> - TCP (nei formati binario, XML, string) - TCP Milestone - FTP (imgs + dati testuali in *.txt/*.csv) - RPC-XML over HTTP / HTTPS - Custom Protocol - Serial (RS 485 port) - Wiegand (need to install SC20 converter) - Xentinel message (over HTTP) - v-SUITE message (over HTTP / HTTPS)		
Supported communication protocols:	<ul style="list-style-type: none"> - TCP/IP - UDP - HTTP - HTTPS - FTP - FTPS - RTP/RTSP - openVPN - ONVIF (S- profile) - NTP - SNMP 		
Data protection:	<ul style="list-style-type: none"> - possibility to activate the management of the web configurator by HTTPS connection - FTPS encryption on TLS/SSL protocol - AES-256-ECB encryption for data and images saved locally and/or sent via the supported protocols - image hash using SHA-512 algorithm and possible encryption of the signature itself using AES-256-ECB - totally GDPR compliant storage management with periodic deletion of the history - cockpit masking function (in case of front detection of vehicles) in order to ensure respect for privacy - possibility to connect the camera inside an openVPN with certificate installed directly on board - advanced management of the firewall on the machine with the possibility of disabling access to the local servers present on the machine (FTP server, ONVIF server, SNMP server, service ports) 		
General features	Dimensions: 212 X 138 X 117 Weight: 2900 g Operating temperature: - 30°; +60° Humidity: fino al 90% Protection: IP67	Regulations	Regulations complied with: EN 55032:2015, EN 55035:2017, EN 50561-1:2013, EN 62368-1 (EN 62368-1:2014+A11:2017), EN 60068-2-14:Nb 2011-11, EN 60068-2-78:2013-11, EN 62471:2010, EN60529:1991+A1:2000+A2:2013, UE Regulation 2016/679 (GDPR)



ANPR Products

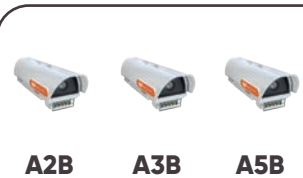
Sensors

OCR sensor and context color			
Progressive scan global shutter black/white OCR sensor			
Progressive scan rolling shutter context color sensor			
Ocr + context + plate image crop	✓	✓	✓
Optional color progressive scan global shutter sensor			

OCR Library

One Lane	✓		
2 Lanes (sc = no motorbike)		✓ (SC)	✓
Three lanes			
OCR library on board with 41 countries in Europe, 13 Asia, 6 Africa, 5 South America	✓	✓	✓
Arabic and Persian characters	✓	✓	✓
Special plates such as Trailers, Kemler ADR, Kemler ADR Empty, Tram	✓	✓	✓
Enabling/disabling ocr reading supported by remote sync	✓	✓	✓
Kemler codes	✓	✓	✓
Nationality recognition	✓	✓	✓
Maximum reading free-run speed	250 km/h	250 km/h	250 km/h

Bispectral



	2 MPX @ 60 FPS	3 MPX @ 75 FPS	5 MPX @ 75 FPS
	✓	✓	✓

Double optics



	2 MPX @ 60 FPS	3 MPX @ 75 FPS	5 MPX @ 75 FPS	5 MPX @ 75 FPS	5 MPX @ 75 FPS
	2 MPX @ 60 FPS	2 MPX @ 60 FPS	2 MPX @ 60 FPS	5 MPX @ 60 FPS	8 MPX @ 60 FPS
	✓	✓	✓	✓	✓
	✓	✓	✓	✓	

Special



	5 MPX @ 75 FPS
	✓

	2 MPX @ 60FPS
	✓
	✓
	✓
	✓
	✓
	✓
	✓
	✓
	200 km/h

Neural Library

Daytime classification of vehicles by type in 11 + 1 (Cars, Trucks, Trucks with trailers, Motor vehicles, Motorcycles, Mopeds, Buses, Mini vans, Big vans, Flatbed trucks, Caravans, unknown)	✓	✓	✓
Night classification of vehicles by type in 4 classes +1 (trucks, buses, cars, motorcycles and unknown)	✓	✓	✓
Daytime classification of vehicles by color in 11 classes + 1 (black, white, grey, red, blue, yellow, green, orange, pink, purple, cyan, unknown)	✓	✓	✓
Vehicle brand classification (around 100 brands supported)	✓	✓	✓
Model classification of vehicles in transit - Rear view (about 400 models supported)	opz.	opz.	opz.

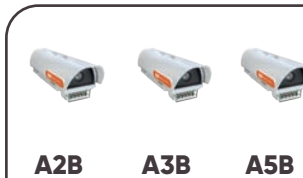
AID Library

Transit speed estimation function	✓	✓	✓
Wrong-way vehicle alarm function, transit direction estimation	✓	✓	✓
Vehicle stopped alarm function	✓	✓	✓
Queue alarm function in the gate (traffic stopped) traffic status detection	✓	✓	✓
Slow traffic alarm function	✓	✓	✓
Lane statistics: occupancy, flow-rate, heading, speed	✓	✓	✓

Security & VMS

H264 context video stream for vms onvif profile S	✓	✓	✓
High resolution on-board video recording flow	✓	✓	✓
Transit movie function	✓	✓	✓
UNI 10772:2016 class 2 lanes front + rear + motorcycle			✓
Radar/laser ready integration configurator and protocols	✓	✓	✓
Red light function			

Bispectral



	✓	✓	✓
	✓	✓	✓
	✓	✓	✓
	✓	✓	✓
	opz.	opz.	opz.

Double optics



	✓	✓	✓	✓	✓
	✓	✓	✓	✓	✓
	✓	✓	✓	✓	✓
	✓	✓	✓	✓	✓
	opz.	opz.	opz.	opz.	opz.

Special



	✓
	✓

	✓	✓	✓	✓	✓
	✓	✓	✓	✓	✓
	✓	✓	✓	✓	✓
	✓	✓	✓	✓	✓
	✓	✓	✓	✓	✓

	✓	✓	✓	✓	✓
	✓	✓	✓	✓	✓
	✓	✓	✓	✓	✓
			✓	✓	✓
	✓	✓	✓	✓	✓
	opz.	opz.	opz.	opz.	opz.

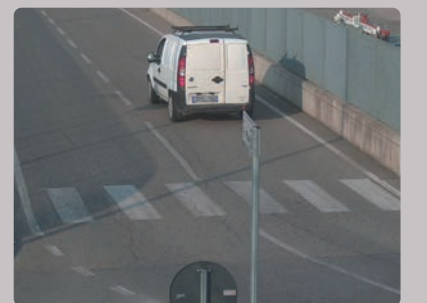
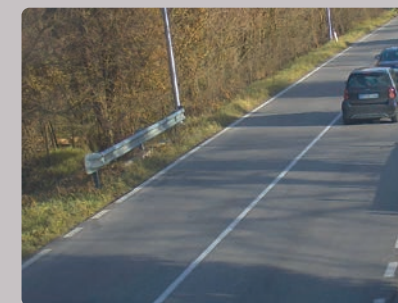


Configuration interface



Each Vigilate product in the ANPR line comes with software for practical, fast, modern configuration, which makes extremely easy to use the product.

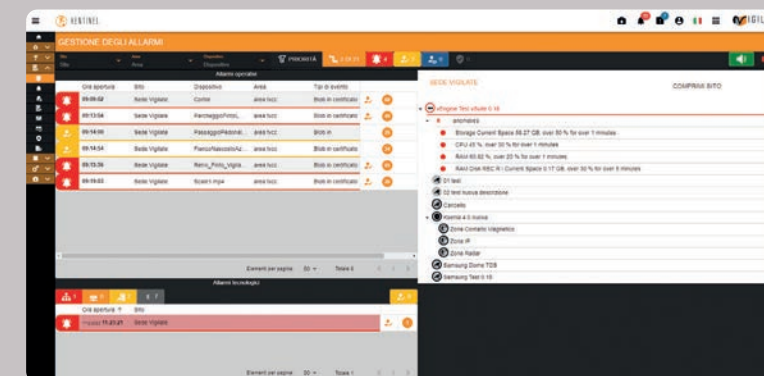
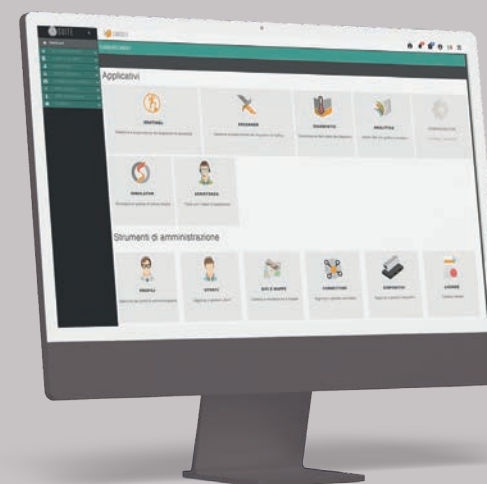
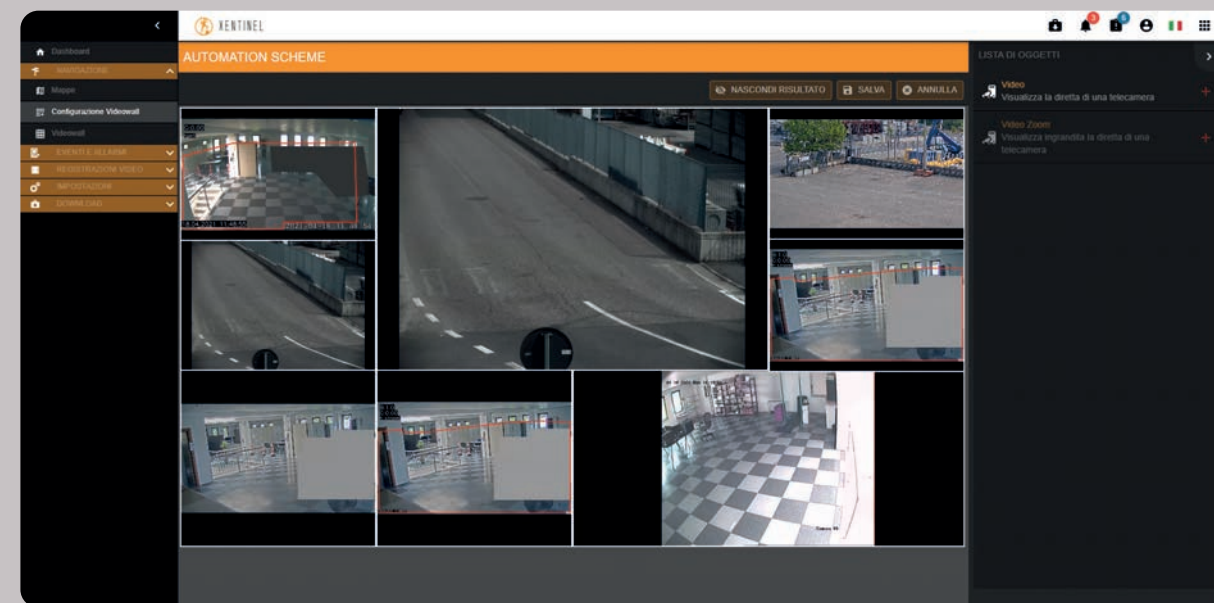
- A single, easy-to-use, professional graphic interface for all products.
- On-demand automatic export function of video clips associated with the transit of a specific vehicle
- Comprehensive search to select a specific vehicle from the transit archive internal database
- Graphical configuration and tuning tools.
- Security, privacy by design and privacy by default.
- HTTPS and token default setting.
- Multiple integration tools with external systems.





v-SUITE Platform

The universal platform for the world of security and traffic management scalable, accessible, intelligent, cloud or private



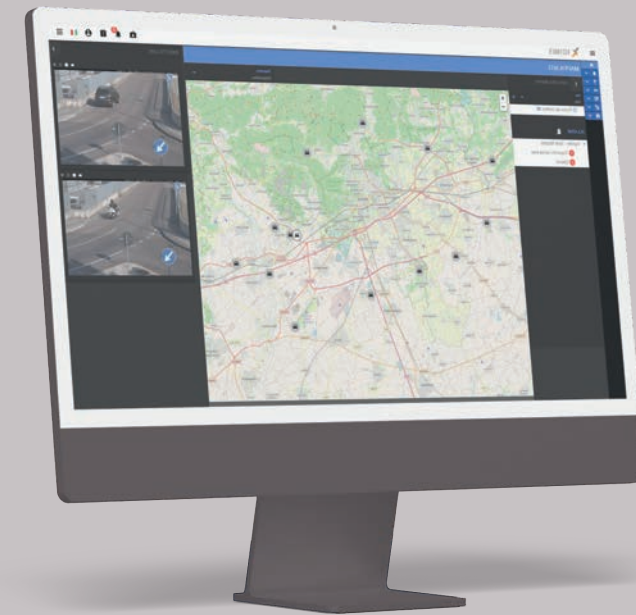
The supervision and control software platform PSIM, which stands for Physical security information management, is scalable, accessible, intelligent, Cloud or Private to supervise all systems in one single point. A full range of vertical applications dedicated to Security and Traffic mManagement, business and consumer software to enable industry partners to better manage and better control their products and deliver new services to their customers. v-SUITE (or management system): was created with the aim of. manage, in a single graphical interface SW environment, all security and traffic control equipment traffic installed in the territory. With v-SUITE you can supervise your own systems,

one's remote locations scattered across the territory, one can manage large infrastructures such as smart cities, smart Road, large communication routes, etc. v-SUITE, thanks to its modularity in terms of application packages and the devices with intelligence distributed intelligence devices installed in the field or emulated at the central level, is capable of managing heterogeneous systems ranging from security to traffic, from energy to Scada systems, from home automation to communications automated safety communications between vehicles and infrastructure C-V2x.



Xscanner v-SUITE module

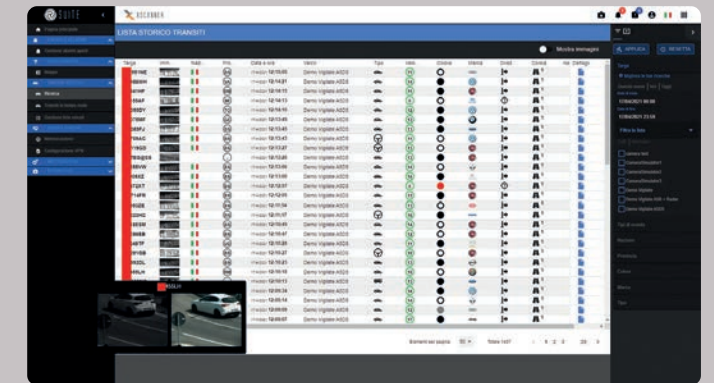
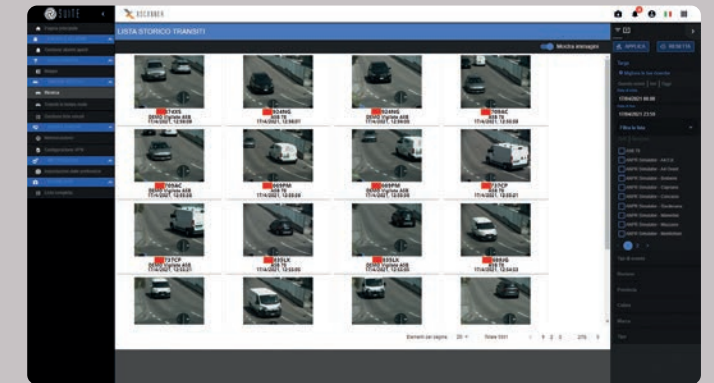
Module of v-SUITE for the management of license plate reading products for territory control installations



Xscanner is aimed at all security operators such as local police, carabinieri, law enforcement to protection and rescue operators and to all private and public administrators who can draw useful insights for decision making.

Features:

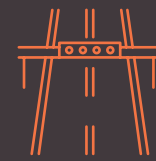
- Stores images and transit data from the license plate reading equipment.
- Stores any context images associated with transits.
- Operates vehicle searches by license plate number even if it is incomplete.
- Displays all details related to OCR images, images of context and transit data of the searched license plates.
- Search for a vehicle by type (mopeds, motorcycles, cars, trucks without trailers, trucks with trailers).
- Manages lists or groups of vehicle lists associated with having alarms and alerts via sms and email.
- Searches for a vehicle by ADR code (Kemler) related to trucks heavy goods transporting dangerous goods (explosives, corrosives, particularly environmentally polluting, radioactive Search by ADR code type.
- Handles alarm events when passing vehicles with an ADR or specific ADR code category.
- Reports vehicles searched by SMS message or email.
- Xwall client module for local PC for simultaneous opening of a large number of video streams (fixed guarding Produces advanced reports for the study of the viability and fluxes of traffic.



- Performs partial and consolidated counting of the number of vehicles passed through, also broken down by individual type of vehicle.
- Displays graphs of the average speed of crossing the crossing on a time basis.
- Classifies vehicles (motor vehicles, motorcycles, mopeds and heavy vehicles).
- Classifies license plate numbers by country of origin (all European countries, GCC, UAE, Australia, Canada, China, North Africa, Latin America).
- Calculates the residence time of vehicles within the built-up area
- Displays the seniority of the vehicle fleet classified on an annual basis.
- Classifies vehicles according to EURO pollutant class (The classification by year of registration and EURO class are active even in the absence of connection to databases external)
- Performs comparative tables of Origin and Destination



Vigilate
is a "tech company"
specialized in the
production of devices and
software platforms for
security and traffic control.



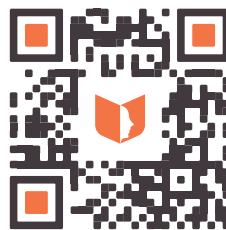
Traffic

- Parking
- Homeland Security
- Highway & Tolling
- Enforcement
- Smart Road



Security

- Company, shops, hotel, parking
- Critical infrastructures
- Banks
- Retail, Fashion, GDO
- Control Room
- Logistics



Vigilate S.r.l.

**Legal and operative site
Via Napolenica, 6,
25086 Rezzato BS Italy**

**VAT: IT01598660056
Tel: +39.0308081000
Pec: vigilatesrl@pec.it
SDI Code: W7YVJK9**