

# WOW SERVICES

ICE & IGB 2027

# FRESH FRUIT SELECTION

## CUT FRESH FRUIT SERVICE

Fruits: melon, cantaloupe melon, blackberry, raspberry, strawberry, pineapple, blueberry, watermelon, dragon fruit, papaya.

Includes: 250 servings, staff, disposable material, napkins, set up and dismantle.

\*Additional Red Berries Available



*Taste the colors of nature*

# BRANDED GINGER SHOTS



## GINGER SHOTS

Made with ginger, apple, and orange juice

100 units served in glass test tubes (minimum quantity)

1 hour of service

# CHURROS AND CATALAN CRÈME BRÛLÉE STATIONS

## CHURROS SERVICE

Includes:

- Up to 2 hours service.
- Includes buffet table, staff, service staff, material, electric needs, set up and dismantle.
- Service with high quality disposable material and tongs.
- Chocolate and vanilla syrup



## CATALAN CRÈME BRÛLÉE SERVICE

Includes:

- Up to 2 hours service (cremated in front of the client).
- Includes buffet table, staff, material, set up and dismantle.
- Service with high quality disposable material.





# COFFEE TRUCK

Brewing Coffee Creativity in Every Cup!

## Coffee APE Service

Includes renting of the coffee APE  
8-hour service per day / 3-day service  
1000 coffees per day (total of 3000)

Includes staff, service staff, material, set up and  
dismantle

Service with high quality disposable material

Electrical needs (3,3 KW) not included.

Service in disposable material

## Branding opportunities

- Counter (both sides and frontal included)
- Wooden sign (113x30 cm)
  - 1 Stencil
- Truck door



# MATCHA DIY ACTIVITY

This price includes:

- The specified beverage for 1.000 people
- 1 hour of service
- Required service staff
- All necessary equipment for service
- Customized disposable cups
- Ice
- Bar (2 stations with 2 modules each)
- Transport

Two bar points: one with 4 bartenders and the other with 5, to ensure a smooth service.

1. First station: one bartender welcomes the participant and takes note of their preferred base (oat milk or cow's milk, with or without lactose, which are the usual options for a Matcha Latte).

2. Second station: the rest of the team guides participants through the ritual using the classic kit, so they can fully experience the preparation process.



# SWEET STATIONS



## COTTON TROLLEY STATION

2h service

Minimum of 500 cotton units

Staff included

## CANDY BUFFET STATION

Includes: 6 different types of candies,  
staff, disposable material, napkins, set up  
and dismantle.



*And many more...!*



Sweet pyramids with small logos  
Includes staff, service staff, material, set up and dismantle  
Service on a buffet table with black tablecloth 2mx0,80m  
Service with high quality disposable material  
Needs to be placed inside the hall

# SWEET PYRAMIDS

## DONUT

25cm diameter / 80 cm high  
67 donuts / 45 logos



## MACARON

25cm diameter / 80 cm high  
400 macarons / 150 logos

## CHOCOLATE TRUFFLES

25cm diameter / 80 cm high  
400 truffles / 150 logos



## CRONUTS AND CANDY

Includes:

- Assorted mini cronuts
- Transparent cellophane bag
- Haribo strawberry bricks
  - Large blackberries
  - Haribo gummies

Total number of hooks: 96 units  
(24 units per side)

# HAM CARVING STATION

## IBERIAN HAM CARVING SERVICE

Includes:

- Up to 4 hours service.
- 2 x Iberian Ham Recebo to cut with bread sticks
- Includes professional ham staff, material, set up and dismantle.
- Ham support, knife, plates, napkins, table and tablecloth.
- Service with high quality disposable material.



# SUSHI MAN



## Sushi show off station with makis and niguiris

Vegetarian Futomaki, Spicy tuna uramaki, Salmon nigiri, Tuna nigiri.

Service for 2 hours

2 sushimakers and 4 pieces per person

Includes staff, service staff, material, set up and dismantle

Includes serviettes cardboard bin, cardboard individual plates, chopsticks and sushi dressings

Service on a buffet table with black tablecloth 2mx0,80m

Service with high quality disposable material

Units available 2

Needs to be placed inside the hall

# DOUGHNUT WALL

## Doughnut wall with branded logo or wording

Includes material, set up and dismantle

200 cm high x 360 cm wide

Does not require power

Needs to be placed inside the hall

Units available 1



# POPCORN SERVICE

Crunch into Happiness!

Includes: 2 hours service, salty popcorn, popcorn trolley, popcorn containers and transport, staff, service staff, material, set up and dismantle

Served in individual cardboard containers (45gr) and with high quality disposable material.

Includes cardboard bin and pop corn containers. If branded ones are needed see supplement.

It must be located nearby power outlet (requires 3,3KW) either inside or outside. Not included in the price.

4 units available.

Set up time: 30 min.

## Branding the machine

- Surface available 94cm x 51cm x 155cm

- Branded pop corn containers (45 gr) Measures: 6,5 x 8,7 x 17,4cm

Minimum order 250 units



# ICE CREAM CARTS

## Serving Scoops of Ice Cream on Wheels!



### FLAVORS

Strawberries ice-cream tub  
Mexican Vanilla ice-cream tub  
Citrus (Carrot, Lemon, Orange and Goma Guar) Sorbet Tub

minimum 200 units

Trolley can be **branded on the sides and frontal**  
Branding Surface (frontal: 815x415/side(each): 755x510)

### Proposed presentation:

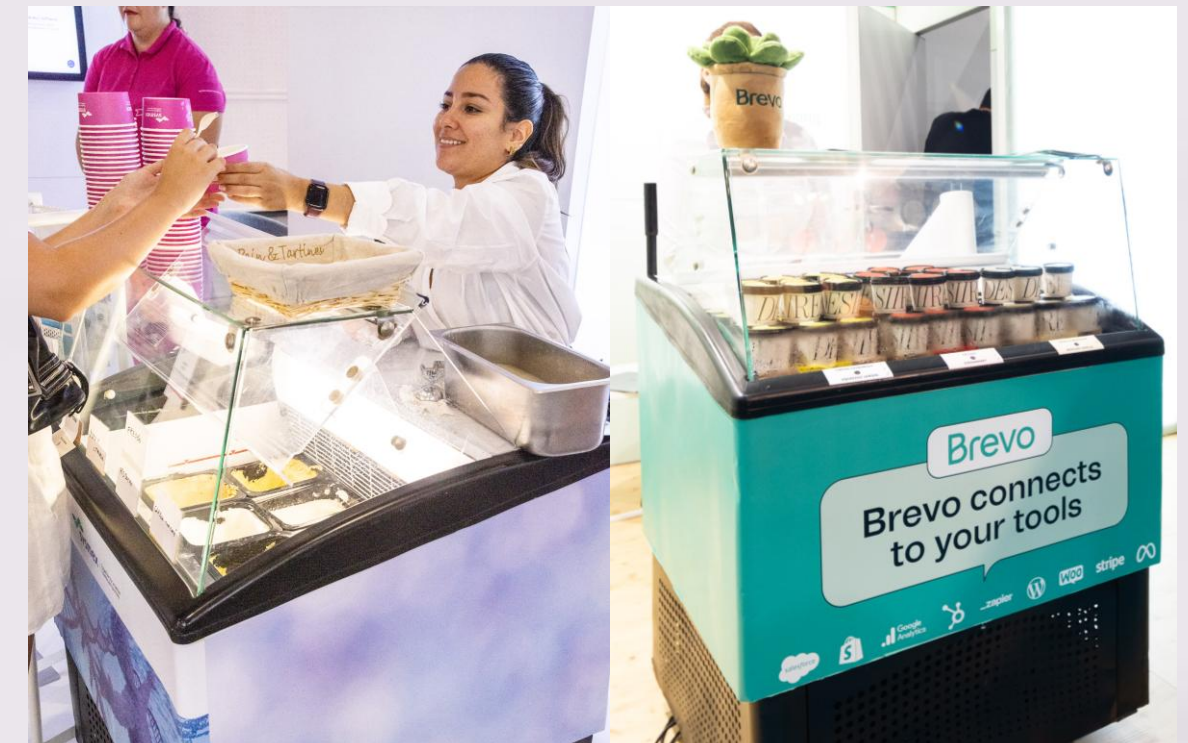
Includes staff, service staff, material, set up and dismantle  
It must be located nearby power outlet either inside or outside

Requires 1,2KW not included in the price

Units available 2

Set up time: 30 min

← *Ask for a special quotation for the Cinquecento Ice Cream Service!*



# ICE CREAM CARTS

Serving Scoops of Ice Cream on Wheels!

MINI DISPLAY (2 available)

Ideal for booths!



## FOOD TRUCK (1 available)

Length 300 cm - Width 200 cm - Height 260 cm

### Features:

- Capacity to display 7 different flavors of ice cream or natural fruits
- Two integrated ice cream machines for greater efficiency

### Electrical Requirements:

- Single-phase Cetac 32 A female connector (we need a male connector to connect)
- 5000 kW of power



## ICE CREAM CART (2 available)

Length 157 cm - Width 90 cm - Height 227 cm

### Features:

- Capacity to display 7 different flavors of ice cream or natural fruits

### Electrical Requirements:

- 1 standard power outlet



## Branding opportunities

- Custom-branded ice cream cups
- Full vinyl wrap of the ice cream cart with the branding
- Variety of stickers featuring the branding for personalizing the food truck

# ICE CREAM TUBS

## Included:

- 1 scoop of ice cream in various flavors (up to 7 flavors), cones, cups, napkins, and spoons.
- Rental of the ice cream cart during the event days.
- 6 hours of daily service provided by a uniformed member



**\*For more than 1,000 ice creams per day, a second team member will be included to serve from the same ice cream cart.**

## Traditional Ice cream

Belgian chocolate 70% cocoa

Stracciatella

Vanilla cookies

## Local Traditional Ice cream

Jijona turrón & Alicante

Crème brûlée

Local Fruit Ice Cream

Lemon verbena sorbet (vegan)

Alphonso Indian Mango sorbet (vegan)

Huelva strawberry sorbet (vegan)

## Creative Ice cream

Dónut

Sant Marc (fresh cream and burnt yolk cake)

Speculos (Lotus biscuit and Sri Lankan cinnamon)

Special diets: vegan

# BUBBLE TEA SERVICE

## TARO MILK BUBBLE TEA

Taro, milk, tapioca pearls.

## LEMON & PASSION FRUIT

### ICE BUBBLE TEA

Black tea, lemon juice, passion fruit popping boba.

## Bubble Tea Service

Includes staff service, transport and disposable glass material

Maximum 2 hours of service

Maximum selection of 2 drinks



# INFUSED WATER BAR

Pure Hydration, Bursting with Flavor!

To choose 2 flavors from the below:

- Kaffir lime & mango
- Pineapple with species
- Orange and ginger
- Apple and cinnamon
- Raspberry and basil

## Infused water bar service

2 flavored jar (25L / 125 servings each)

Includes setup, dismantling, transport, 250 disposable glasses, flavored menu presented on acrylic display.

Trolley or furniture not included



# SMOOTHIES JUICE BAR

Taste the Vibrant Flavors of Healthful Elixirs!



To Choose 4 flavors from the list:

Banana, lemon and mint

Kiwi pineapple and basil

Carrot, mango and orange

Banana, strawberry and orange

Strawberry, orange, rosemary, basil

Pineapple, grapefruit and honey

Mango, orange, raspberry

*Please allow 450 W x 2 (4 Blender) for the smoothie service*

## Smoothies Juice Bar

(minimum of 500 smoothies per day)

Includes staff service, transport and disposable glass material

Maximum 2 hours of service

Maximum selection of 4 drinks

# PIANO BAR

Piano bar with pianist barman and musicians

Includes: staff, cocktails, service staff, material, set up and dismantle

Choose 1 of the below options;

1. Italian Aperitifs
2. Campari Spritz & Gin Tonic
3. Welcome drinks
4. Spritz's bar
5. Negroni's bar
6. Mocktail's bar

Service with high quality disposable material

Service duration 1 hour

Service needs set up of 2 hours

Units available 1



# DALI CHOCOLATE EGGS



Indulge in the Wonder and Sweetness of Giant Dalí Eggs!

*Ask for more information if you are interested in receiving a quotation*